



**India Meteorological Department
(Ministry of Earth Sciences)**

NATIONAL BULLETIN NO. 05 (BOB/05/2023)

TIME OF ISSUE: 0920 HOURS IST

DATED:16.11.2023

FROM: INDIA METEOROLOGICAL DEPARTMENT (FAX NO. 24643965/24699216/24623220)

TO: CONTROL ROOM, NDM, MINISTRY OF HOME AFFAIRS (FAX.NO. 23093750)

CONTROL ROOM NDMA (FAX.NO. 26701729)

CABINET SECRETARIAT (FAX.NO.23012284, 23018638)

PS TO HON'BLE MINISTER FOR S & T AND EARTH SCIENCES (FAX NO.23316745)

SECRETARY, MOES (FAX NO. 24629777)

H.Q. (INTEGRATED DEFENCE STAFF AND CDS) (FAX NO. 23005137/23005147)

DIRECTOR GENERAL, DOORDARSHAN (23385843)

DIRECTOR GENERAL, AIR (23421105, 23421219)

PIB MOES (FAX NO. 23389042)

UNI (FAX NO. 23355841)

D.G. NATIONAL DISASTER RESPONSE FORCE (NDRF) (FAX NO. 26105912, 2436 3260)

DIRECTOR, PUNCTUALITY, INDIAN RAILWAYS (FAX NO. 23388503)

CHIEF SECRETARY, ODISHA (FAX NO. 0674-2536660)

CHIEF SECRETARY, WEST BENGAL (FAX NO. 033-22144328)

CHIEF SECRETARY, ANDHRA PRADESH (FAX NO. 0863-2441029, 08645-246600)

CHIEF SECRETARY, TAMIL NADU (FAX NO 044-25672304)

CHIEF SECRETARY, PUDUCHERRY (FAX NO 0413-2334145)

ADMINISTRATOR, ANDAMAN & NICOBAR ISLANDS (FAX NO. 03192- 232656)

CHIEF SECRETARY, GOVT. OF TRIPURA (FAX NO. 0381-2414013, 2413200)

CHIEF SECRETARY, GOVT. OF MIZORAM (FAX NO. 0389-2322745, 2320588)

CHIEF SECRETARY, GOVT. OF MANIPUR (FAX NO. 0385-2452629)

CHIEF SECRETARY, GOVT. OF NAGALAND (FAX NO. 0370-2270057)

CHIEF SECRETARY, GOVT. OF ASSAM (FAX NO. 0361-2260900)

CHIEF SECRETARY, GOVT. OF MEGHALAYA (FAX NO. 0364-2225978)

Sub: Depression intensified into a Deep Depression over Westcentral Bay of Bengal

The Depression over Westcentral Bay of Bengal moved north-northeastwards with a speed of 18 kmph during past 6 hours, intensified into a Deep Depression and lay centred at 0530 hours IST of today, the 16th November over Westcentral Bay of Bengal near latitude 16.9°N and longitude 86.8°E, about 380 km east-southeast of Visakhapatnam (Andhra Pradesh), 380 km south of Paradip (Odisha), 530 km south-southwest of Digha (West Bengal) and 670 km southwest of Khepupara (Bangladesh).

It is likely to continue to move north-northeastwards, intensify further and cross Bangladesh coast between Mongla and Khepupara with wind speed 55-65 kmph gusting to 75 kmph around morning of 18th November 2023.

Forecast track and intensity are given below:

Date/Time (IST)	Position (Lat. °N/ long. °E)	Maximum sustained surface wind speed (Kmph)	Category of cyclonic disturbance
16.11.23/0530	16.9/86.8	50-60 kmph gusting to 70 kmph	Deep Depression
16.11.23/1130	17.6/87.1	50-60 kmph gusting to 70 kmph	Deep Depression
16.11.23/1730	18.3/87.4	55-65 kmph gusting to 75 kmph	Deep Depression
16.11.23/2330	19.0/87.8	55-65 kmph gusting to 75 kmph	Deep Depression
17.11.23/0530	19.7/88.2	60-70 kmph gusting to 80 kmph	Cyclonic Storm
17.11.23/1730	20.9/89.0	60-70 kmph gusting to 80 kmph	Cyclonic Storm
18.11.23/0530	22.0/89.8	55-65 kmph gusting to 75 kmph	Deep Depression
18.11.23/1730	23.1/90.3	40-50 kmph gusting to 60 kmph	Depression
19.11.23/0530	24.1/90.5	20-30 kmph gusting to 40 kmph	Well Marked Low

Warnings:

(i) Rainfall Warning (graphics enclosed):

- Light to moderate rainfall at many places with isolated heavy rainfall is likely over coastal districts of West Bengal on 16th & 17th and over coastal districts of north Odisha on 16th November.
- Light to moderate rainfall at many places with isolated heavy rainfall is likely over Nagaland, Manipur, Mizoram & Tripura during 16th to 18th November and over south Assam and east Meghalaya on 17th & 18th November.

(ii) Wind warning (graphics enclosed):

- **Squally weather** with wind speed reaching **35-45 kmph gusting to 55 kmph** is likely to prevail over southwest Bay of Bengal along & off Tamil Nadu & Puducherry and Sri Lanka coasts on 16th November.
- **Squally wind** speed reaching **50-60 kmph gusting to 70 kmph** prevailing over Westcentral & adjoining Northwest Bay of Bengal is likely to continue during next 12 hours. It would increase becoming **60-70 gusting to 80 kmph** over Northwest Bay of Bengal from 17th morning for subsequent 12 hours and decrease thereafter becoming **55-65 kmph gusting to 75 kmph** over the region.
- **Squally wind** speed reaching **45-55 kmph gusting to 65 kmph** likely over Northeast Bay of Bengal from 17th evening to 18th morning.
- **Along & off Andhra Pradesh Coast: Squally wind speed reaching 30-40 kmph gusting 50 kmph** is likely on 16th November along & off south Andhra Pradesh coast and **40-50 kmph gusting 60 kmph** during 16th to 17th along & off north Andhra Pradesh coast. It would decrease thereafter.
- **Along & off Odisha Coast: Squally wind speed reaching 45-55 kmph gusting 65 kmph** is prevailing and likely to increase gradually becoming **50-60 kmph gusting 70 kmph** from 16th evening till 17th evening and decrease thereafter.
- **Along & off West Bengal Coast: Squally wind speed reaching 40-50 kmph gusting 60 kmph** is prevailing. It is likely to increase gradually becoming **55-65 kmph gusting 75 kmph** from 17th morning till 18th morning and decrease thereafter.
- **Along & off Bangladesh Coast: Squally wind speed reaching 45-55 kmph gusting 65 kmph** is likely from 16th evening and increase becoming **55-65 kmph gusting 75 kmph** from 17th morning till 18th morning and decrease thereafter.

(iii) Sea Condition:

- **Rough to very rough sea condition** is likely over
 - Southwest Bay of Bengal along & off Tamil Nadu & Puducherry and Sri Lanka coasts on 16th November.

- Westcentral and adjoining south Bay of Bengal on 16th November and over Northeast Bay of Bengal from 17th morning to 18th morning.
- North and adjoining westcentral Bay of Bengal on 16th to 18th November. **It would become very rough to high over Northwest Bay of Bengal from 17th morning to 18th morning.**
- **Along & off south Andhra Pradesh coast** on 16th November & north Andhra Pradesh coast on 16th to 17th November.
- **Along & off Odisha coast, West Bengal coast and Bangladesh coast** during 16th to 18th November

(iv) Fishermen Warning:

Fishermen are advised not to venture into

- Southwest Bay of Bengal on 16th November
- Westcentral Bay of Bengal during 16th to 17th November
- Northwest Bay of Bengal during 16th to 18th November and Northeast Bay of Bengal from 17th morning to 18th morning.
- Along & off Andhra Pradesh Coast during 16th to 17th November
- Along & off Odisha coast, West Bengal coast and Bangladesh coast during 16th to 18th November

The Fishermen out at sea are advised to return to coast.

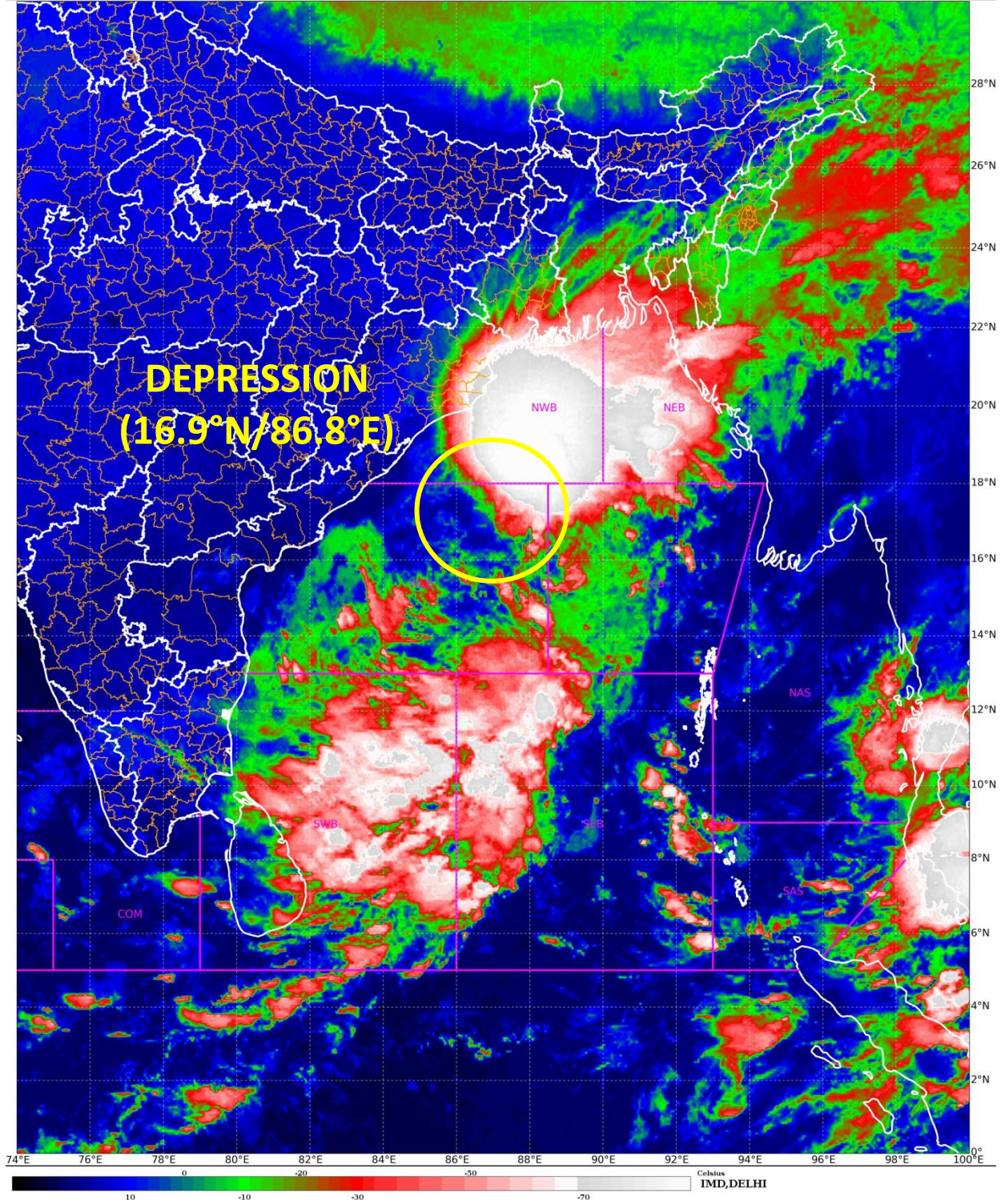
(v) Damage Expected & Action Suggested for coastal areas of Odisha & West Bengal:

- Minor damage to loose/unsecured structures.
- Some breaches in Kutcha road due to flooding.
- Minor damage to small trees like Banana. Papaya and Drumstick and ripe paddy crops.
- Partial Damage to standing crops in coastal areas of Odisha & west Bengal.
- Minor damage to Kutcha embankments.

The system is under continuous surveillance and the next message will be issued at 1130 hours IST of today, the 16th November, 2023.

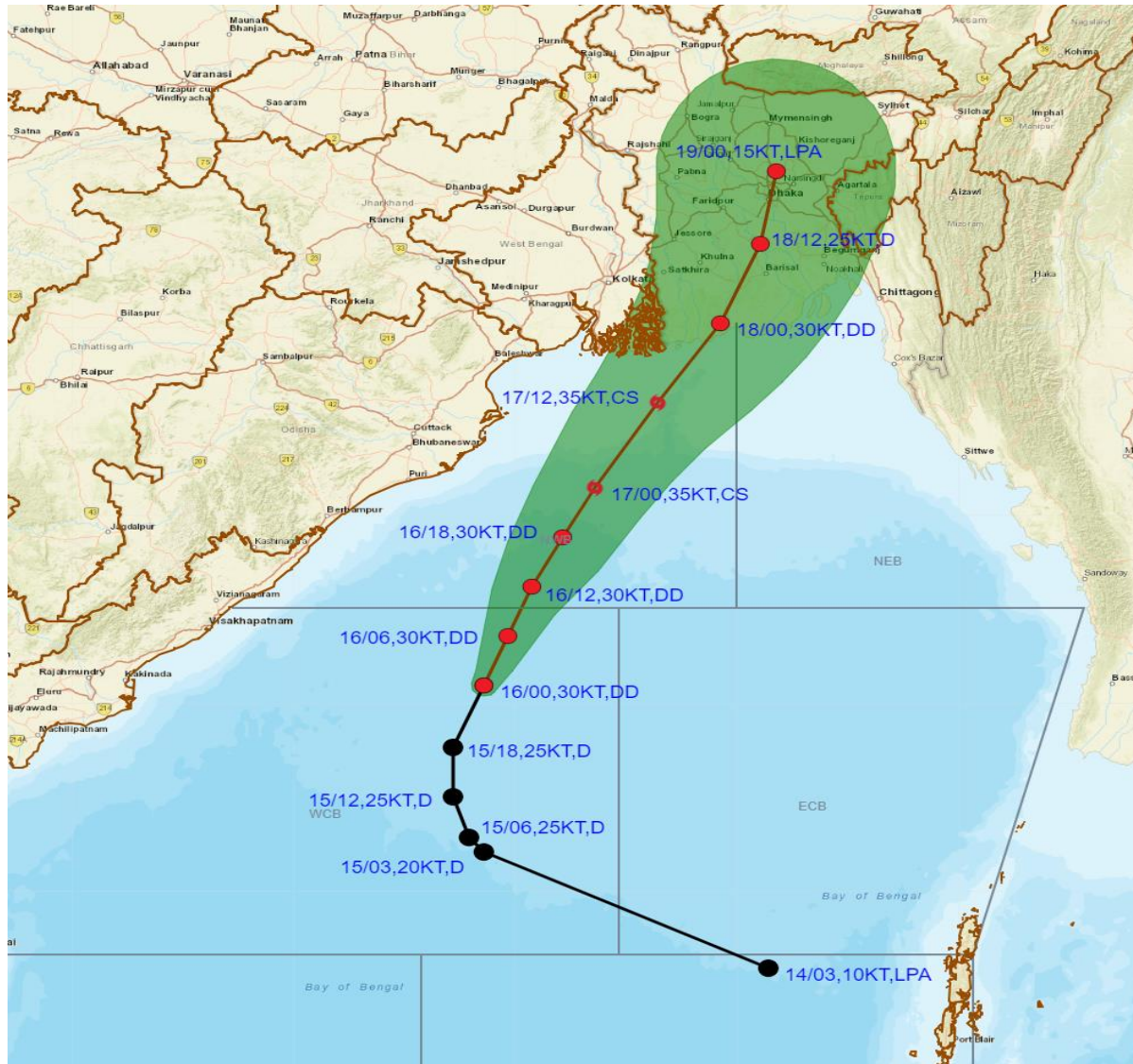
(Ananda K Das)
Scientist F, Cyclone Warning, New Delhi

Copy to: ACWC Mumbai/ ACWC Chennai/ ACWC Kolkata/CWC Ahmedabad/CWC Bhubaneswar/CWC Vishakhapatnam/CWC Thiruvananthapuram/MC Goa





OBSERVED AND FORECAST TRACK AND INTENSITY ALONGWITH CONE OF UNCERTAINTY IN ASSOCIATION WITH DEEP DEPRESSION OVER WESTCENTRAL BAY OF BENGAL BASED ON 0000 UTC (0530 IST) OF 16TH NOVEMBER 2023.



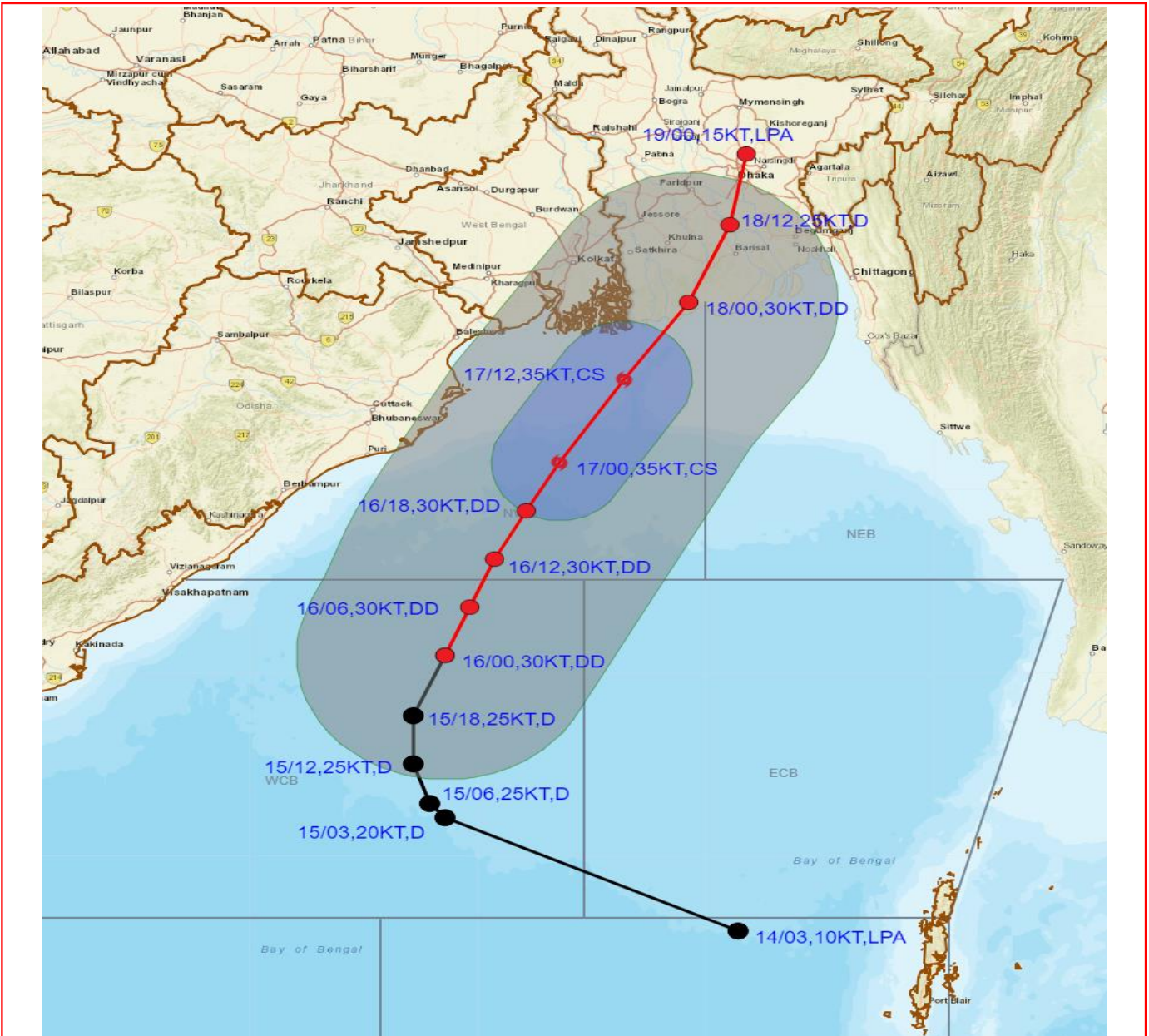
DATE/TIME IN UTC
 IST=UTC + 0530
 L: LOW PRESSURE AREA
 WML: WELL MARKED LOW PRESSURE AREA
 D: DEPRESSION (17-27 KT)
 DD: DEEP DEPRESSION (28-33 KT)
 CS: CYCLONIC STORM (34-47 KT)
 SCS: SEVERE CYCLONIC STORM (48-63KT)
 VSCS: VERY SEVERE CYCLONIC STORM (64-89 KT)
 ESCS: EXTREMELY SEVERE CYCLONIC STORM (90-119 KT)
 SuCS: SUPER CYCLONIC STORM (≥ 120 KT)

- LESS THAN 34 KT
- ⊙ 34-47 KT
- ⊙ ≥ 48 KT
- OBSERVED TRACK
- FORECAST TRACK
- ▲ CONE OF UNCERTAINTY

Forecast	DISTANCE(KM) AND DIRECTION FROM STATIONS			
	PARADIP	DIGHA	KHEPUPARA	CHITTAGONG (AMBAGAN)
17.11.23/0000	180, ESE	220, SSE	330, SW	470, SW
17.11.23/1200	260, ENE	180, ESE	170, SW	330, WSW
18.11.23/0000	370, ENE	240, E	40, W	210, W



OBSERVED AND FORECAST TRACK AND INTENSITY ALONG WITH QUADRANT WIND DISTRIBUTION IN ASSOCIATION WITH DEEP DEPRESSION OVER WESTCENTRAL BAY OF BENGAL BASED ON 0000 UTC (0530 IST) OF 16TH NOVEMBER 2023.



DATE/TIME IN UTC
 IST=UTC + 0530
 L: LOW PRESSURE AREA
 WML: WELL MARKED LOW PRESSURE AREA
 D: DEPRESSION (17-27 KT)
 DD: DEEP DEPRESSION (28-33 KT)
 CS: CYCLONIC STORM (34-47 KT)
 SCS: SEVERE CYCLONIC STORM (48-63KT)
 VSCS: VERY SEVERE CYCLONIC STORM (64-89 KT)
 ESCS: EXTREMELY SEVERE CYCLONIC STORM (90-119 KT)
 SuCS: SUPER CYCLONIC STORM (≥ 120 KT)

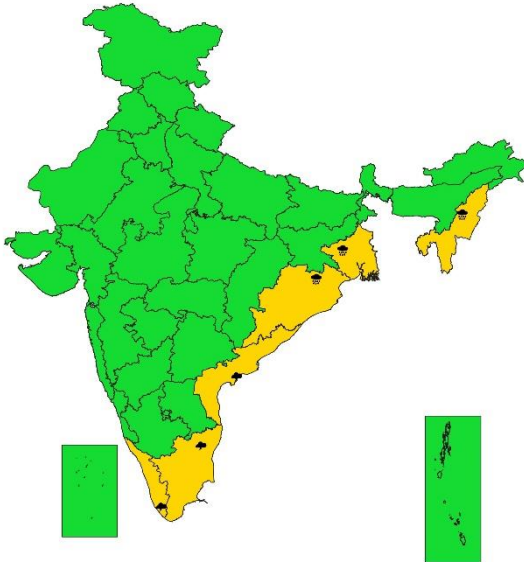
● LESS THAN 34 KT
 ○ 34-47 KT
 ○ ≥ 48 KT
 — OBSERVED TRACK
 — FORECAST TRACK
 — CONE OF UNCERTAINTY
 — AREA OF MAXIMUM SUSTAINED WIND SPEED:
 ■ 28-33 KT (52-61 KMPH)
 ■ 34-49 KT (62-91 KMPH)
 ■ 50-63 KT (92-117 KMPH)
 ■ ≥ 64 KT (≥ 118 KMPH)

IMPACT OVER THE SEA

MSW (knot/kmph)	Impact	Action
28-33 (52-61)	Very rough seas	Total suspension of fishing operations
34-49 (62-91)	High to very high seas	Total suspension of fishing operations
50-63 (92-117)	Very high seas	Total suspension of fishing operations
≥ 64 (≥ 118)	Phenomenal	Total suspension of fishing operations



**SUBDIVISIONWISE WEATHER WARNING FOR DAY 1
(16-11-2023)**



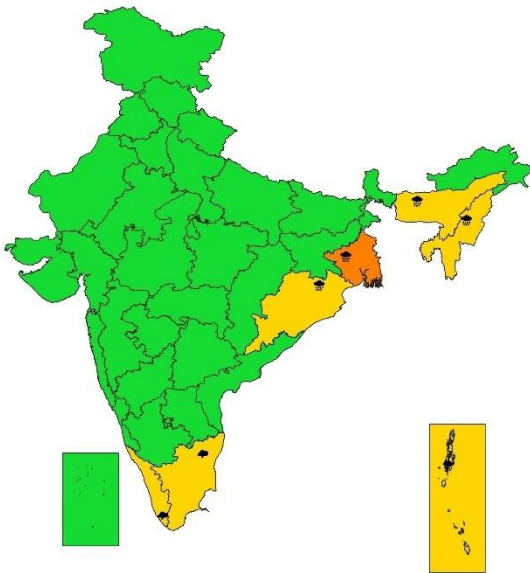
- | | | |
|----------------------------|----------------------|--------------------------|
| Subdivision Warning | Dust Storm | Subdivision color |
| Heavy Rain | Strong Surface Winds | NO WARNING |
| Heavy Snow | Heat Wave | WATCH(BE UPDATED) |
| Thunderstorms & Lightning | Cold wave | ALERT (BE PREPARED) |
| Hailstorm | Fog | WARNING (TAKE ACTION) |

WARNING

WARNING (TAKE ACTION)
ALERT (BE PREPARED)
WATCH (BE UPDATED)
NO WARNING (NO ACTION)



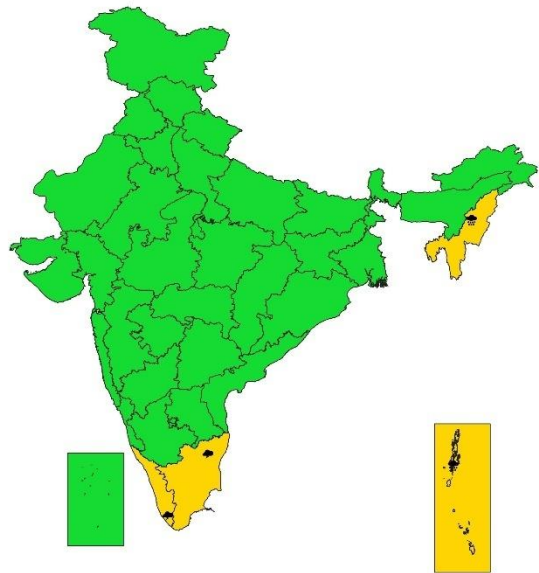
**SUBDIVISIONWISE WEATHER WARNING FOR DAY 2
(17-11-2023)**



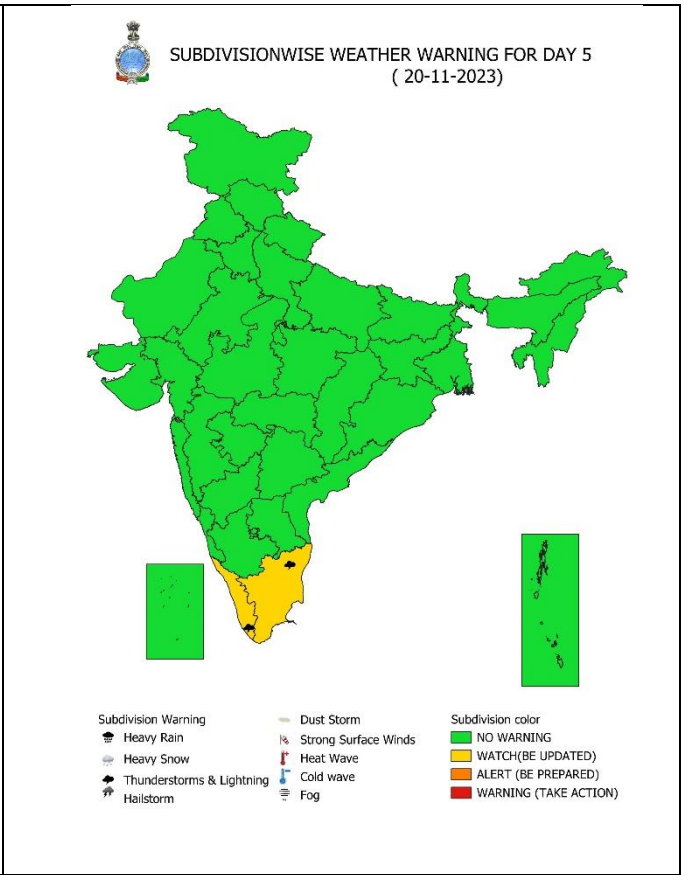
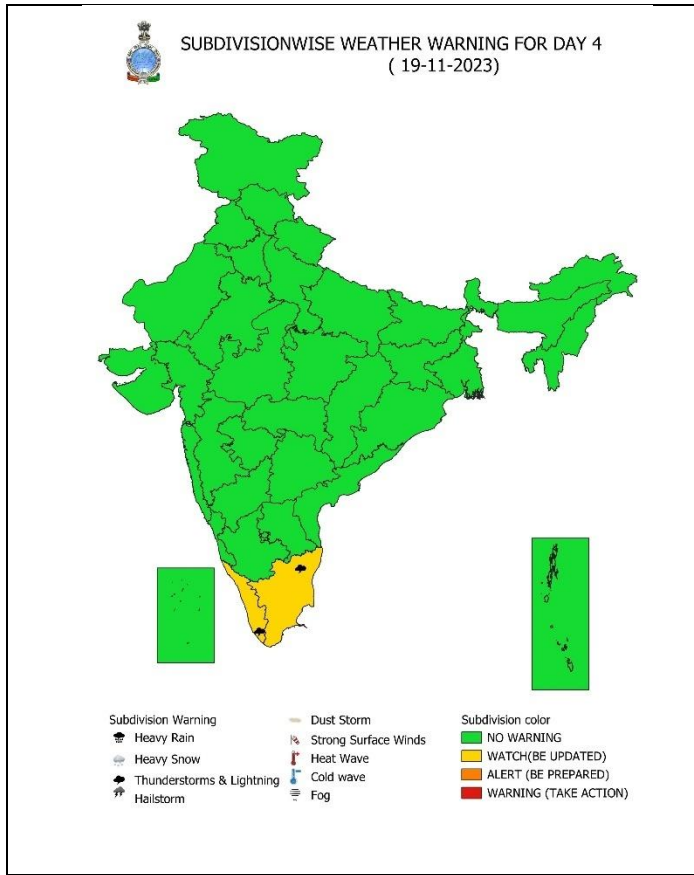
- | | | |
|----------------------------|----------------------|--------------------------|
| Subdivision Warning | Dust Storm | Subdivision color |
| Heavy Rain | Strong Surface Winds | NO WARNING |
| Heavy Snow | Heat Wave | WATCH(BE UPDATED) |
| Thunderstorms & Lightning | Cold wave | ALERT (BE PREPARED) |
| Hailstorm | Fog | WARNING (TAKE ACTION) |



**SUBDIVISIONWISE WEATHER WARNING FOR DAY 3
(18-11-2023)**



- | | | |
|----------------------------|----------------------|--------------------------|
| Subdivision Warning | Dust Storm | Subdivision color |
| Heavy Rain | Strong Surface Winds | NO WARNING |
| Heavy Snow | Heat Wave | WATCH(BE UPDATED) |
| Thunderstorms & Lightning | Cold wave | ALERT (BE PREPARED) |
| Hailstorm | Fog | WARNING (TAKE ACTION) |



Fishermen warning graphics

Day 1: 16.11.2023/05:30PM to 17.11.2023/05:30AM



Day 2: 17.11.2023/05:30AM to 18.11.2023/05:30AM



Day 3: 18.11.2023/05:30AM to 19.11.2023/05:30AM



Day 4: 19.11.2023/05:30AM to 20.11.2023/05:30AM



Day 5: 20.11.2023/05:30AM to 21.11.2023/05:30AM



Squally WX with wind speed 40-45 kmph gusting to 55 kmph

Squally WX with wind speed 45-55 kmph gusting to 65 kmph

Squally wind with speed 50-60 kmph gusting to 70 kmph

CS with Gale wind speed 60-90 kmph gusting to 110 kmph

Fishermen are advised not to venture into the marked areas.